



KeratinRx

KeratinRx Brazilian Keratin Smoothing Treatment Combo

This smoothing treatment mask is developed with essential amino acids and unique additives for the best hair care results. It restores moisture, elasticity, and overall tensile strength to reduce volume and frizz.

How to Use:

After shampooing with the clarifying shampoo, towel dry the hair thoroughly. Apply the treatment from root to ends. Leave in the hair for 45 minutes under a dryer rinse condition, then proceed with blow drying and flat ironing **(See application guide on next page).**



500 ml – 16.90 fl oz

Ingredients:

Water, Cetearyl Alcohol, Cetrimonium Chloride, Fragrance, Propylene Glycol, Behentrimonium Methosulfate, Glycolic Acid, Isopropyl Myristate, Glycerin, Aloe Barbadensis Extract (Aloe Vera), Hydrolyzed Keratin, Rosmarinus Officinalis Extract (Aloericm), Disodium EDTA, Hydroxyhydrocinnamate, Tourmaline, Potassium Sorbate, Sodium Benzoate, Citric Acid, Lodopropynyl Butylcarbamate, Terasodium EDTA, (Limonene)

KeratinRx Brazilian Keratin Smoothing Treatment Combo, Cont'd

How to Use Step-by-Step Instructions:

1. Clarify the Hair

Start by shampooing the hair thoroughly with KeratinRX Clarifying Shampoo to remove all buildup and open the hair cuticle. Towel-dry the hair until damp — not soaking wet.

2. Prepare for Treatment

The KeratinRX Brazilian Smoothing Treatment can be applied immediately after a color service. For optimal results, always apply color before the smoothing treatment.

Tip: If coloring darker, the treatment will help seal and brighten the tone. You can also add direct dyes into the formula for custom color enhancement.

3. Apply the Treatment

Divide hair into sections. Apply the treatment evenly from roots to ends using a brush or comb. Ensure full saturation without over-application.

4. Process Under Heat

Leave the treatment on for 45 minutes under a dryer with a plastic cap, or in open air depending on hair type and salon setup.

5. Blow-Dry

Blow-dry the hair smooth using a round or paddle brush. For coarse or frizzy hair, use tension to maximize smoothing results.

6. Flat Iron to Seal

Flat iron the hair in thin sections at 420°F for coarse hair, and 400°F for finer hair.

Use a ceramic plate for fine to medium hair.

Use a titanium plate for coarse or resistant hair.

Stylist Tips:

- Product may also be used as a leave-in smoothing treatment or blow-dry aid for frizz-prone textures.
- Adjust treatment amount based on hair density and curl pattern.
- Rinse lightly if needed before flat ironing on very sensitive or fragile hair.

Have fun and make beautiful hair happen!

— Carlos DiCarlos

KeratinRx Keratin & Marula Oil Infused Shampoo

This luxurious shampoo gently cleanses, protects, and illuminates hair while reducing color fading from UV exposure. Marula oil penetrates deep into the hair shaft, delivering antioxidants and omega fatty acids that lock in hair color. This sulfate- and silicone-free formula is enriched with botanicals that nourish the scalp and hair.

How to Use:

Massage gently throughout wet hair. Once fully lathered, rinse thoroughly. Follow with KeratinRx Conditioner.



400ml / 14.1 fl oz

Ingredients:

Aqua, Sodium Lauryl Sulfate, Cocamidopropyl Betaine, Ammonium Lauryl Sulfate, Sodium Lauroyl Sarcosinate, Cocamide DEA, Polyquaternium-43, Palmitamidopropyltrimonium Chloride, Starch Hydroxypropyltrimonium Chloride, Sodium Cocamide MEA, Marula Oil, Guar Hydroxypropyltrimonium Chloride, Sodium Glycinate, Acrylates, Hydrogenates, Jojoba Oil, Argania Spinosa Kernel Oil, Collagen Protein, Polyquaternium-10, Disodium EDTA, Quaternium-80, Glycine Max (Soybean) Callus Extract, Anthemis Nobilis Flower Extract, Aloe Barbadensis Extract, Rosemary Leaf, Keratin Protein, Allantoin, Citric Acid, Piroctone Olamine, Methylchloroisothiazolinone, Methylisothiazolinone, Fragrance.

KeratinRx Keratin & Marula Oil Infused Conditioner

KeratinRX Marula Oil Conditioner restores, strengthens, and smooths the hair cuticle while improving manageability. It transforms weak, damaged strands by deeply nourishing each one—leaving hair soft, shiny, and frizz-free. The high oleic acid, antioxidants, and omega fatty acids in Marula Oil help improve elasticity and deliver a luxurious finish.

How to Use:

After shampooing, distribute from scalp to ends. Rinse thoroughly.



400ml / 14.1 fl oz

Ingredients:

Aqua, Cetearyl Alcohol, Behentrimonium Chloride, Distearyltrimonium Chloride, Cetyl Alcohol, Trideceth-12, Dimethicone, Hydroxyethylcellulose, Steartrimonium Chloride, Marula Oil, Hydroxypropyltrimonium Hydrolyzed Collagen, Hydrogenated Jojoba Oil, Argania Spinosa Kernel Oil, Collagen Protein, Disodium EDTA, Quaternium-80, Glycine Max (Soybean) Callus Extract, Anthemis Nobilis Flower Extract, Aloe Barbadensis Extract, Rosemary Leaf, Keratin Protein, Methylchloroisothiazolinone, Methylisothiazolinone, Citric Acid, Fragrance.

KeratinRx Marula Oil

KeratinRx Marula Oil is a lightweight, leave-in conditioning treatment infused with antioxidant-rich Marula Oil to deliver moisture, shine, and protection while reducing frizz. Rich in Oleic Acid, this oil penetrates deep into the scalp and hair shaft to lock in hydration. Plant stem cells help repair, nourish, and restore elasticity, leaving hair silky, smooth, and beautifully healthy.

How to Use:

Apply a small amount to damp hair for smooth, striking results. Style as desired.



60ml / 2.0 fl oz

Ingredients:

Cyclopentasiloxane, Isoparaffin, Dimethicone, Argania Spinosa Kernel Oil, Isopropyl Myristate, Marula Oil, Jojoba Oil, Glycine Max Extract, Anthemis Flowers Extract, Aloe Barbadensis Extract, Rosmarinus of Ficialnis Extract, Fragrance.

KeratinRx Marula Oil Leave-In Spray

KeratinRx Leave-In Spray is enriched with organic Marula Oil and advanced multigrade proteins to hydrate, smooth, and protect hair from heat and UV damage. UVA-UVB filters guard against color fading, while the lightweight formula reduces frizz and enhances shine. A daily styling essential for silky, healthy hair.

How to Use:

Spray a small amount onto wet or dry hair. Do not rinse. Use daily as a finishing treatment or before blow-drying, perming, or flat ironing.



250ml / 8.5 fl oz

Ingredients:

Aqua, Dimethiconol, Cyclopentasiloxane, Glycerin, Marula Oil, Jojoba Oil, Collagen Protein, Disodium Edta, Glycine Max Extract, Anthemis Nobilis Flower Extract, Keratin Protein, Methyl Chloroisothiazolinone, Methylisothiazolinone, Citric Acid, Fragrance.

KeratinRx Intensive Repair Mask

KeratinRX Intensive Repair Mask is infused with Marula Oil, Jojoba Oil, and Argan Oil to deliver deep conditioning and repair. This rich treatment nourishes chemically treated hair, enhances elasticity, and boosts tensile strength. Hair is left smoother, shinier, and more manageable—while maintaining its color vibrancy.

How to Use:

Shampoo hair and towel dry. Apply 2oz–4oz directly to the hair and gently massage in. Leave in for approximately 5 minutes. Rinse thoroughly and style as usual.



500ml / 17.6 fl oz

Ingredients:

Water, Hydroxypropyl Guar Hydroxypropyltrimonium Chloride, Behentrimonium Chloride, Quaternium-80, Cetearyl Alcohol, Cetyl Alcohol, Hydroxyethylcellulose, Hydroxypropyltrimonium, Hydrolyzed Collagen, Steartrimonium Chloride, Amodimethicone, Dimethicone, Phenoxyethanol, Marula Oil, Argania Spinosa Kernel Oil, Jojoba Oil, Glycine Max (Soybean) Callus Extract, Anthemis Nobilis Flower Extract, Aloe Barbadensis Extract, Fragrance.

KeratinRX Ionic Blow Dryer – 1300W Brushless Motor

Lightweight yet powerful, this professional-grade ionic blow dryer is equipped with a high-speed brushless motor designed for fast, efficient drying. With a sleek, travel-friendly design, it features a foldable handle, magnetic diffuser, and two nozzle attachments. The ionic technology helps reduce frizz and static while enhancing shine for smooth, salon-quality results.

How to Use:

Towel-dry hair to remove excess moisture. Attach desired nozzle or diffuser, then power on. Use medium to high heat for rapid drying, or cool air to lock in styles. Ideal for daily use, styling, and smoothing treatments.



KeratinRX Tourmaline Ceramic Flat Iron – 1.25” Slim Plate

This high-performance flat iron features tourmaline-infused ceramic plates designed to deliver fast, even heat distribution. Ideal for fine hair, the slim plate glides smoothly to create sleek, frizz-free results with every pass. The gentle infrared heat helps minimize heat damage while locking in shine and smoothness.

How to Use:

Divide clean, dry hair into sections. Glide the flat iron slowly from roots to ends. Use on low to medium heat settings for fine or delicate hair.



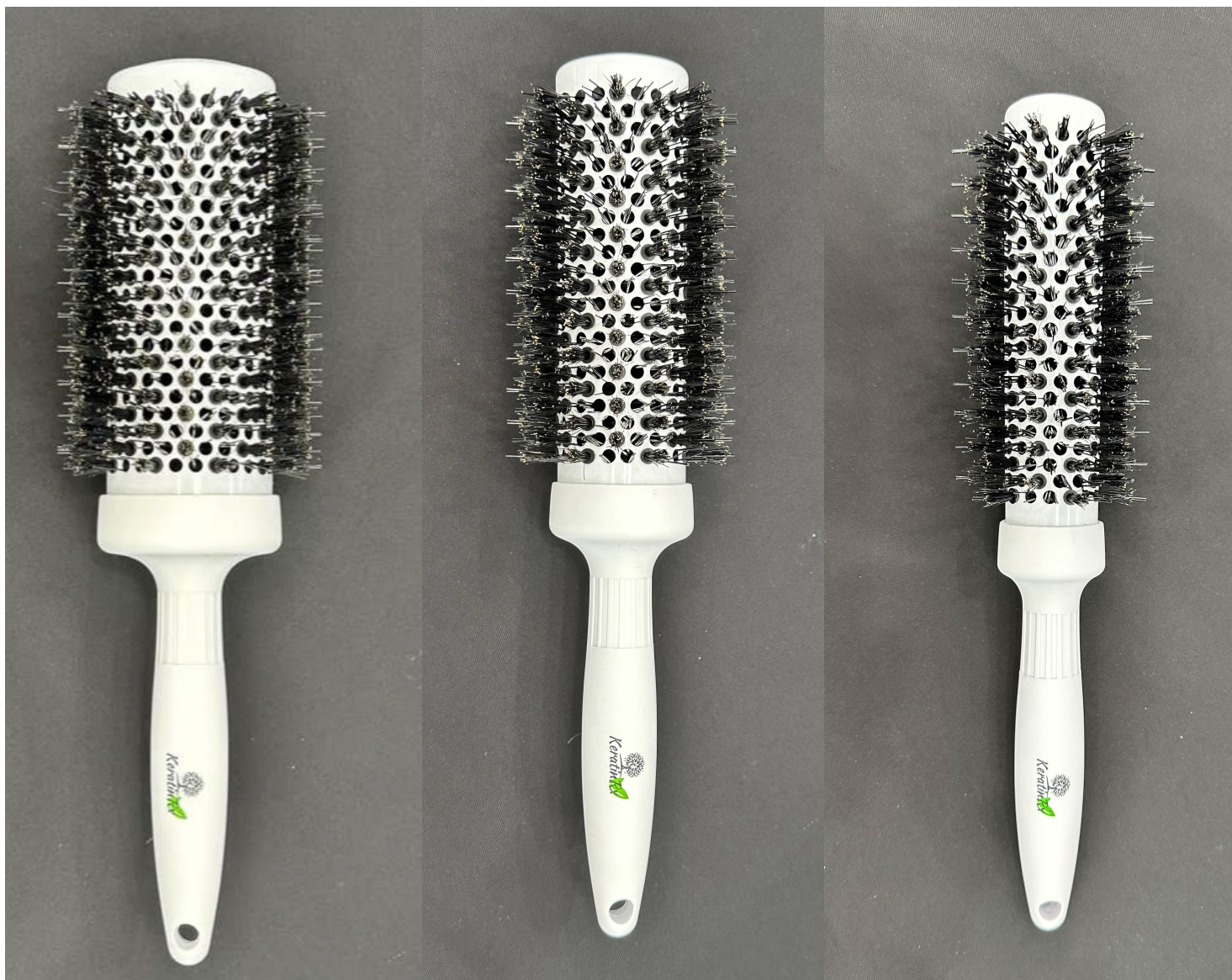
KeratinRX Ionic Thermal Barrel Brushes

Experience salon-level styling precision with the KeratinRX Ionic Thermal Barrel Brush. Designed with a 6-inch barrel and a professional-grade boar and nylon bristle combo, this brush is ideal for creating smooth, voluminous blowouts with ease.

The ceramic-coated barrel heats quickly and evenly, locking in shine while minimizing heat damage. Whether you're smoothing fine strands, lifting roots, or shaping bouncy curls, this brush helps you achieve flawless results on every hair type.

How to Use:

Use on damp, detangled hair. Wrap sections around the brush while blow drying, applying downward airflow for smoothness. Ideal for adding volume, curl, or sleek finishes. Available in 1", 1.5", and 2" barrel sizes to suit all styling needs.



KeratinRX Scalp Stimulating Brush

The KeratinRX Scalp Stimulating Brush is designed to invigorate the scalp, enhance circulation, and promote overall scalp health. Its flexible, curved shape follows the natural contour of the head, while the combination of soft boar and nylon bristles gently exfoliates and detangles. Perfect for use during shampooing, treatments, or daily brushing routines, this stylist-favorite tool helps create the ideal foundation for healthy hair growth and shine.

How to Use:

Use on dry or damp hair to gently massage the scalp in circular motions. Ideal for enhancing circulation, boosting relaxation, and evenly distributing product. Works beautifully before shampooing or during scalp treatments.





**Thank You for Choosing
KeratinRX!**

Next Generation Haircare for Professionals



Wholesale Ordering

All products in this catalog are available to purchase online at exclusive wholesale pricing.



Stylist Support

Have questions about application, product pairings, or salon usage?

Visit: keratinrx.com/apply

Email: info@keratinrx.com

Call or Text: 561-400-2330

We're here to support you. Whether you're looking for technical guidance or reordering help, our team is just a call or click away.

[Apply Now](https://keratinrx.com/apply)